

Resource Development Lands

The Future of Zero Waste

Mary Lou Van Deventer
Operations Manager

Bay Area Industrial Roundtable & ABAG
May 8, 2008

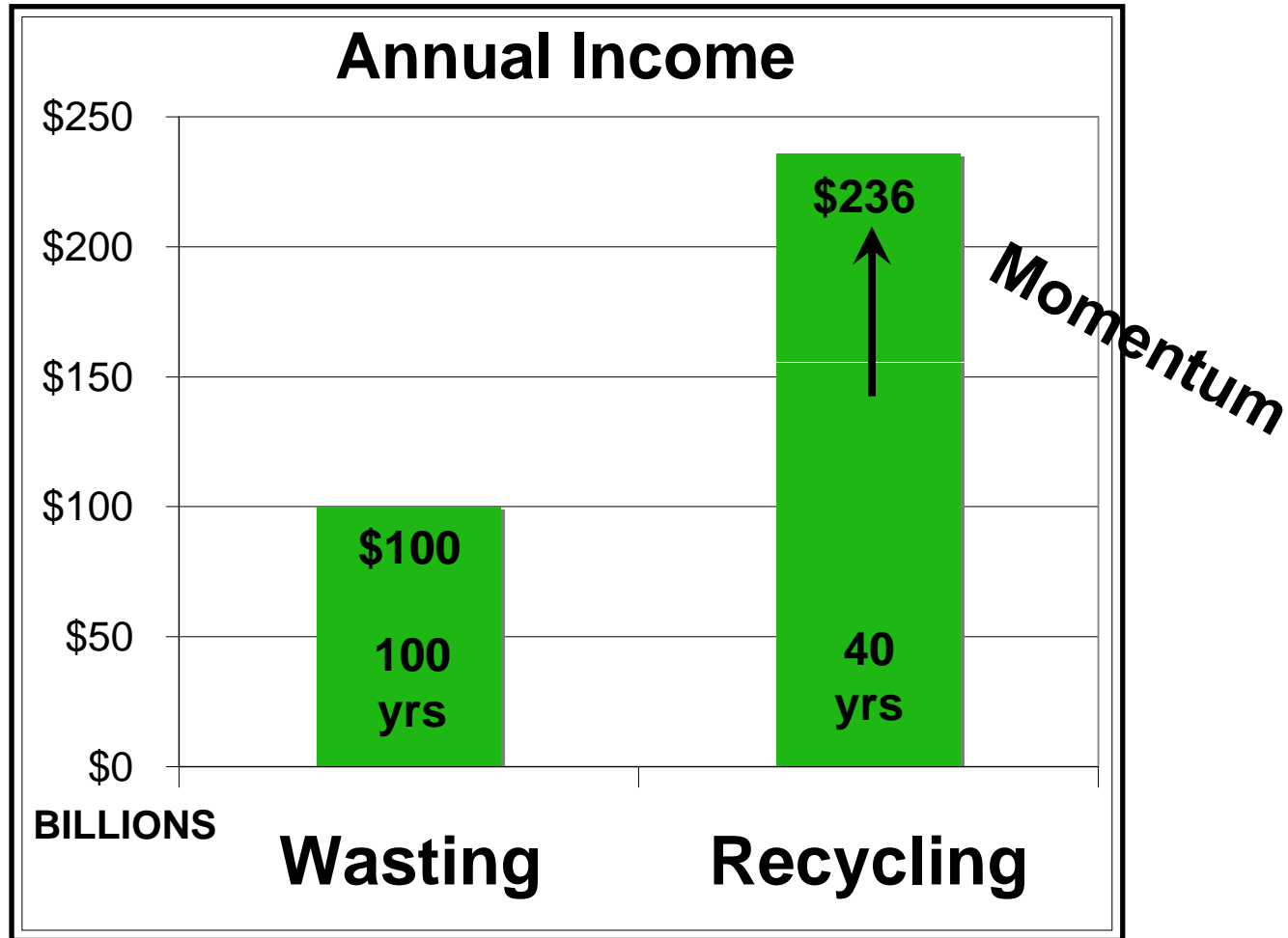
In Zero Waste, Disposal *Requires* Resource Development

$$\begin{array}{r} \text{REDUCE} \\ + \text{REUSE} \\ + \text{RECYCLE} \\ \hline = \text{ZERO WASTE} \end{array}$$

..... Moment of Discard

Total Recycling = Resource Development

The Paradigm Has Shifted



Figures cited by Progressive Investor, Feb-Mar 2008

Old and New - APPROACH

OLD

- Collect mixed.
- Divert as add-on.
- Prefer equipment similar to wasting.



NEW

- Collect clean.
- Upgrade for market.
- Develop new equipment to improve product.



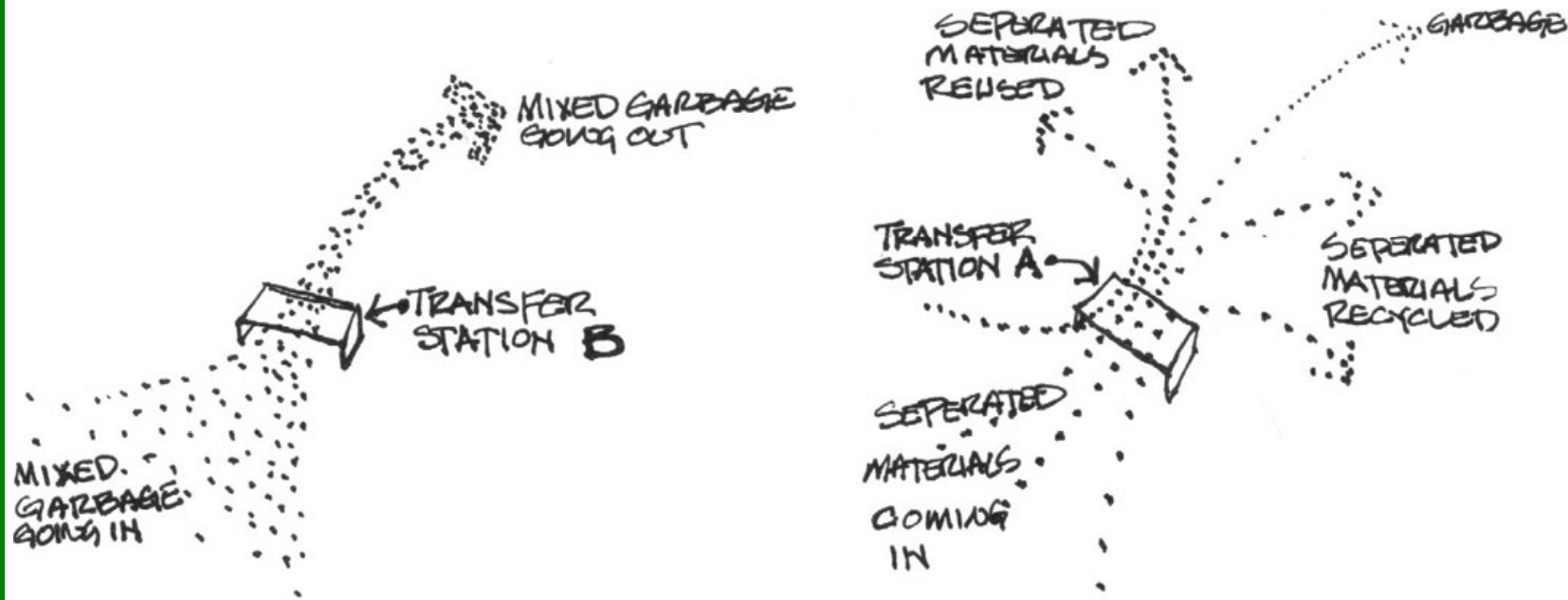
Old and New - ADMINISTRATION

OLD

Keep it simple and life will be good.

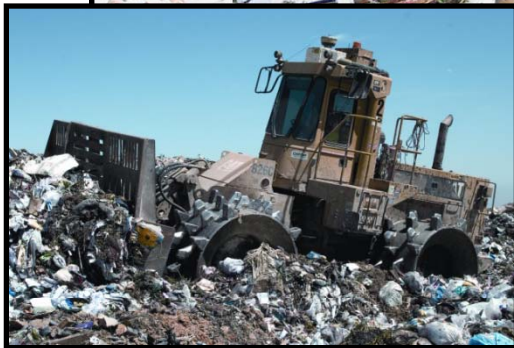
NEW

Manage diversity to grow the system.

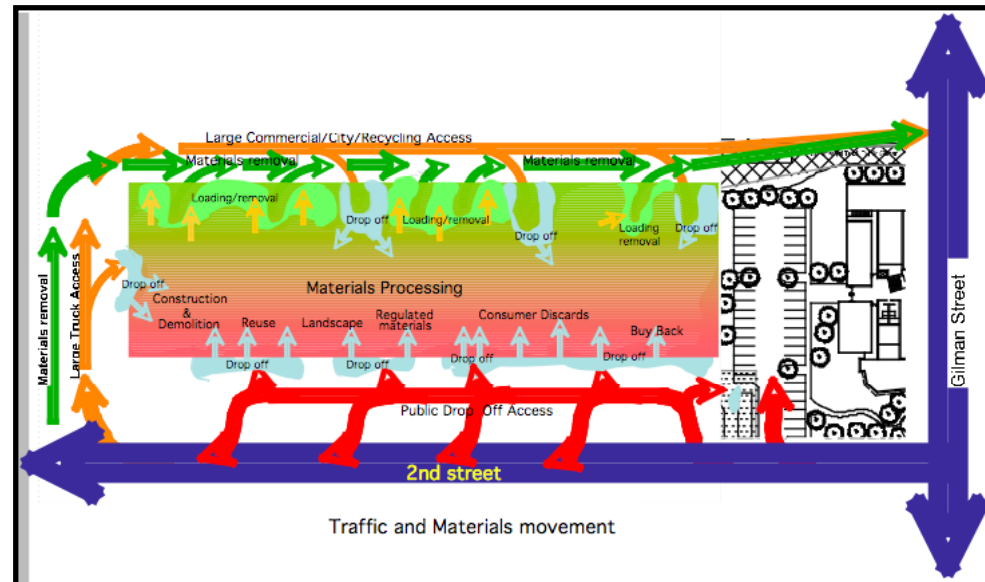


Old and New - FACILITIES

OLD
Solid waste
transfer station and
landfill.



NEW
Zero-waste recovery park
with multiple specialized
enterprises.



Old and New - PRODUCTS

OLD

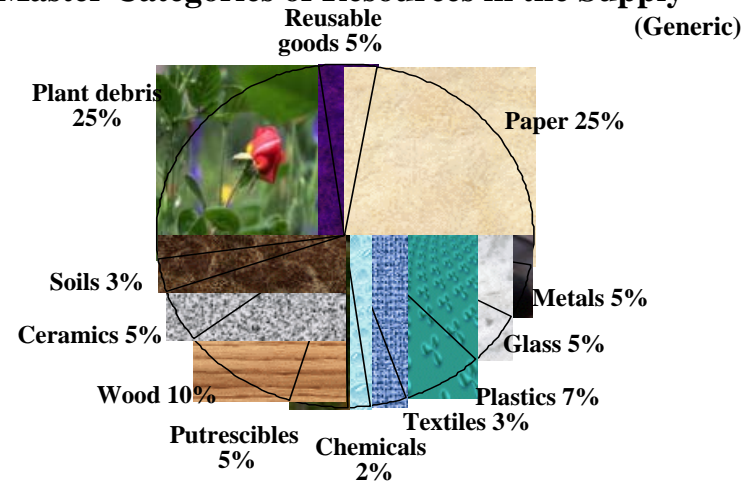
- GHG gases.
- Pollution of land, air, and water.
- Longterm liability.



NEW

- Many categories of refined feedstocks.
- Less upstream pollution.
- Longterm income.

12 Master Categories of Resources in the Supply



©1989 Daniel Knapp, Ph.D., and Mary Lou Van Deventer.
Everyone is welcome to use these categories provided they credit the authors.

Old and New - CITY INCOME

OLD

- Service fees by weight; most pass through to franchisees.

\$

\$

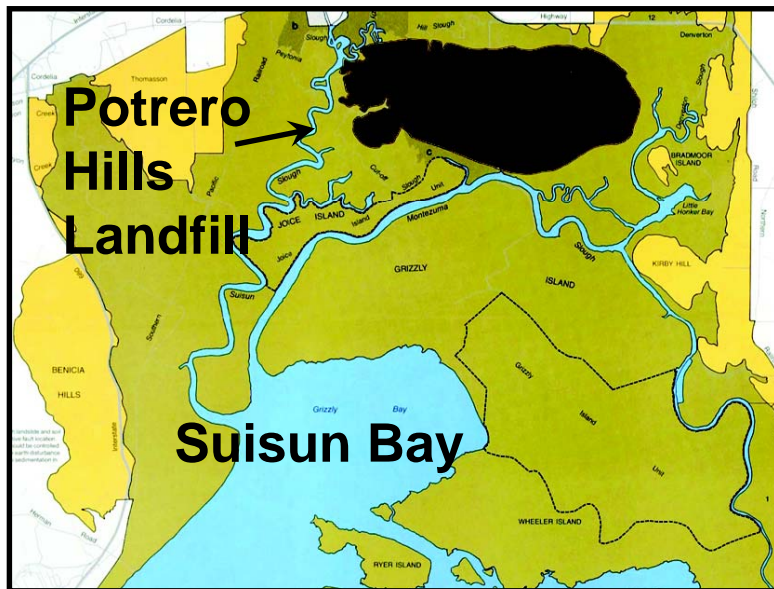
NEW

- Service fees by weight and commodity; some pass through.
- Resource sales & tax.
- Potential rental income if like airport.
- Secondary economic growth in ongoing production industries.

Old and New - LAND USE

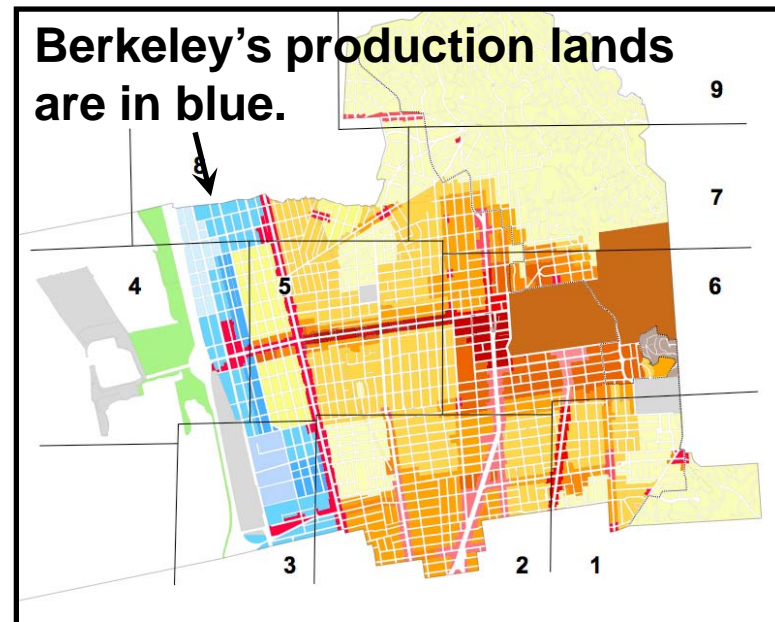
OLD

- Small urban footprint.
- Huge rural footprint.



NEW

- Small rural footprint.
- Large urban footprint for recovery park and production businesses.

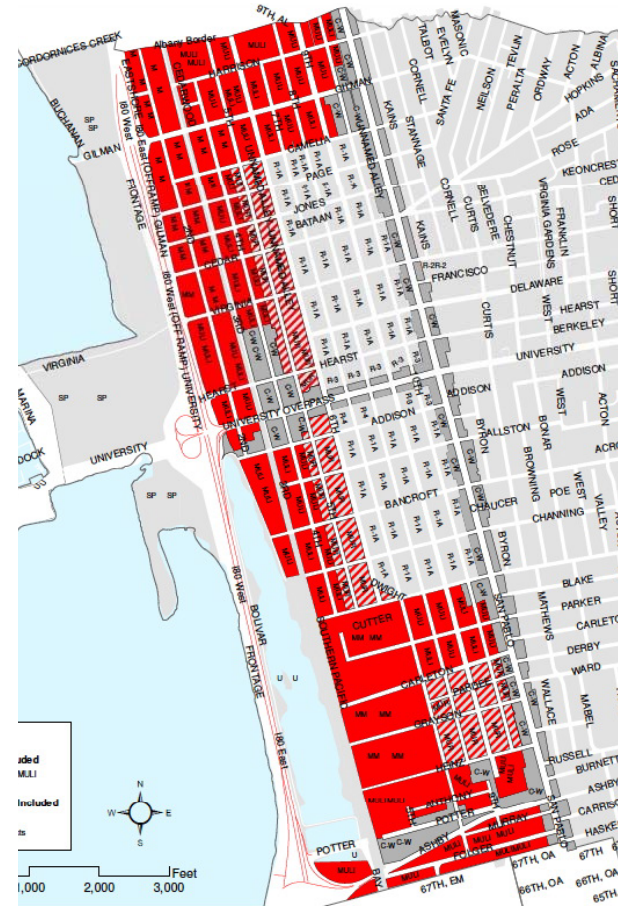


Old and New - LAND USE

Berkeley



Citizens planned production lands.



Planners ask for “flexibility” for other development.

URBANORE®

TO END THE AGE OF WASTE



**900 MURRAY ST.
BERKELEY, CA 94710
PHONE 510-841-SAVE**

**MARY LOU VAN DEVENTER
OPERATIONS MANAGER
MARYLOUVAN@URBANORE.US**

URBANORE
TO END THE AGE OF WASTE